

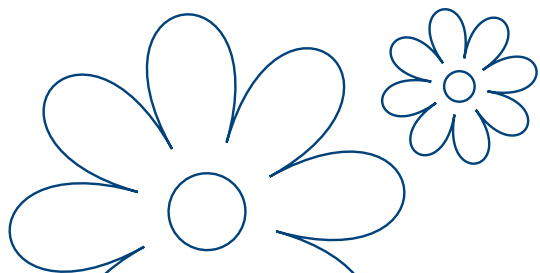
lovelace medical group *providers*

To schedule an appointment or help choosing a provider, please visit lovelacemedicalgroup.com.

For providers, please fax all referrals to 505-727-9593.

For referral questions, call 505-727-6390.

For medical records, call 505-727-6395 or fax 505-727-9590.



Lovelace
Medical Group

Bariatrics

4420 Irving Blvd NW
Albuquerque, NM 87114
Ph: 505-727-2790

Providers:

Celia Jones, NP
Amanda Walker, RD, LD
Nirja Kaffle, FNP-BC
Sara Grandy, MS, RD

Breast Care

4705 Montgomery Blvd NE
Albuquerque, NM 87109
Ph: 505-727-6900

Providers:

Darcy Cooke, PA-C
Rosemary Rodriguez, PA-C
Cal Ridgeway, MD

Cardiology

502 Elm St NE
Albuquerque, NM 87102
Ph: 505-841-1000

Providers:

GENERAL CARDIOLOGY:

Michael Adjei-Poku, MD
Eddie Brown, MD
Katherine Oberg, PA
Mel Peralta, MD
Maithili Shenoy, MD
Laura McDermott, NP
Celia Yazzie, AG-ACNP
Munif Hussein Alkouz, MD
Charles Kim, MD
Lakshmi Parvathaneni, MD
Mridula Rai, MD
Karen Sopko, MD
Geoffrey Steffens, NP

CARDIOTHORACIC SURGERY:

Dana Booth, MD
Luis Cerda, MD
Brian Castlemain, MD
Kevin Richardson, MD

ELECTROPHYSIOLOGY:

Eliana Acosta, NP
Michael Bestawros, MD
Sean Mazer, MD
Brad Gwyther, PA
Yaw Adjei-Poku, MD
Michael Hoskins, MD
Sandeep Nair, MD
Catherine Mahoney, NP

INTERVENTIONAL CARDIOLOGY:

Mark Bieniarz, MD
Geoffrey Kunz, MD
Raymond Yau, MD
Stacey Clegg MD
William Finley, CNP

VASCULAR SURGERY

Trent Lee Proffitt, MD
Richard Wilkerson, MD
Jessica Secor, MD

2240 Grande Blvd. SE, Suite 102
Rio Rancho, NM 87124
Ph: 505-841-1000

Providers:

Munif Hussein Alkouz, MD
Mel Peralta, MD

4701 Montgomery Blvd NE
Albuquerque, NM 87109
Ph: 505-727-6971

Providers:

Karen Sopko, MD
Luka Exelby, ACNP

4801 McMahon Blvd, Suite 110
Albuquerque, NM 87114
Ph: 505-727-4440

Providers:

Michael Gurule, MD
Roderick Woods, MD
Michael Carpenter, PA

1631 Hospital Drive, Suite 110
Santa Fe, NM 87505
Ph: 505-984-8012

ELECTROPHYSIOLOGY:

Benjamin Remo, MD

GENERAL CARDIOLOGY:

Lucas Chacon-Lutrick, MD
Reed Otten, MD
Geri Vigil-Bartles, CNP
Andrea Chavez, FNP

INTERVENTIONAL CARDIOLOGY:

Marc Levine, MD
Timothy Vellinga, MD
Camila Maestas, MD
Adam Ronan, MD

Colorectal Surgery

715 Dr. Martin Luther King Jr. Ave, NE, Suite 301
Albuquerque, NM 87102
Ph: 505-727-7090

Providers:

Jill Clark, MD, FACS, FASCRS

Ear, Nose, Throat & Hearing Center

1020 Tijeras Ave NE
Albuquerque, NM 87106
Ph: 505-727-1670

Providers:

Micaela Dagucon, MD
Brian Long, FNP
Allyson Ray, M.D., FACS
Leah Fry, Aud
Jason E. Mudd, MD
Sherna Sheth, MD

Endocrinology & Diabetes Care Clinic

6701 Jefferson NE
Albuquerque, NM 87109
Ph: 505-727-5010

Providers:

Kathleen Colleran, MD
Lynda Shey, APRN
Namrata Jannareddy, MD

Gastroenterology

4705 Montgomery Blvd NE, Suite 201
Albuquerque, NM 87109
Ph: 505-727-7833

Providers:

Bridget Coyne, CNP
Jessica Ryder, PA-C
Julie Farrer, MD

10511 Golf Course Rd NW, Ste 204
Albuquerque, NM 87114
Ph: 505-727-7833

Providers:

Leslie Monagle, FNP

500 Walter St NE, Suite 401
Albuquerque, NM 87102
Ph: 505-727-7833

Providers:

Genevieve Davis, CNP
Laura LeBlanc, CNP

continue...

General Surgery

715 Dr. Martin Luther King Jr. Ave, NE, Suite 301
Albuquerque, NM 87102
Ph: 505-727-7090

Providers:

Jill Clark, MD, FACS, FASCRS
David Hoang, MD, FACS
Erica McBride, DO, FACS

Craig Gilcrease, PA-C
Emily Hunter, PA-C
Rio Udell, PA-C

6701 Jefferson NE
Albuquerque, NM 87109
Ph: 505-727-7050

Providers:

Michael Blea, MD, FACS
Mario Leyba, MD, FACS
Corinthian Snodgrass, PA-C

Amy Bower, PA-C
Christina Parks, NP
Stephen Soltero, PA

4420 Irving Blvd NW
Albuquerque, NM 87114
Ph: 505-727-2790

Providers:

David Freeman, MD, FACS
Reagan Martin, PA-C

Internal Medicine

6701 Jefferson NE
Albuquerque, NM 87109
Ph: 505-727-6200

Providers:

Rosa Galvez, MD

3900 Las Estancias Ct SW
Albuquerque, NM 87121
Ph: 505-727-4200

Providers:

Fredie Diaz, MD

4420 Irving Blvd NW
Albuquerque, NM 87114
Ph: 505-727-6300

Providers:

Khadija Mamsa, MD

Interventional Radiology

601 Dr Martin Luther King Jr Ave NE
Albuquerque, NM 87102
Ph: 505-727-8255

Providers:

Matthew Bordegaray, MD
Kirk Giesbrandt, MD

Medical Oncology

715 Dr. Martin Luther King Jr Blvd. Ste. 102
Albuquerque, NM 87102
Ph: 505-727-3040

Providers:

Muhammad Anas Tarakji, MD
Malcolm H. Purdy, MD

Paul Brittain, MD
Jerry Tucker, RD, LD, CLC

Neurology

500 Walter St NE, Suite 401
Albuquerque, NM 87102
Ph: 505-727-5910

Providers:

Kader AbdeleRahman, MD
Vanessa Licona SanJuan, MD

Saleem Al Mawed, MD
Daniel Shibuya, MD

Neurosurgery

500 Walter St NE, Suite 401
Albuquerque, NM 87102
Ph: 505-727-5910

Providers:

Mark Bryniarksi, MD
Mary Elizabeth Trujillo, CNP

OB-GYN

4705 Montgomery Blvd NE, Suite 301
Albuquerque, NM 87109
Ph: 505-727-4500

Providers:

Addie Gillespie, CNM, FNP-C
Aubrey Huerta, PA
Amy MacLeod, CNM, MSN
Rachel Pirkle, CNM
Kara Shain, MD
Joel Teicher, MD, FACOG
Dhyana K Velasco, MD

Patricia A Heinz, CNM
Alexandra Lusk, MD
Patrisia Enriquez Najera, CNM
Melissa C Scott, DNP, CNM
Jessie Simmon, MD, MSc
Michelle C Underwood, PA-C, MPAS

10511 Golf Course Rd NW, Suite 201
Albuquerque, NM 87114
Ph: 505-727-4500

Providers:

Bethany Barrow, MD, FACOG
Patricia Black, MD
Audra McKillip-Heard, MSN, CNM, RN

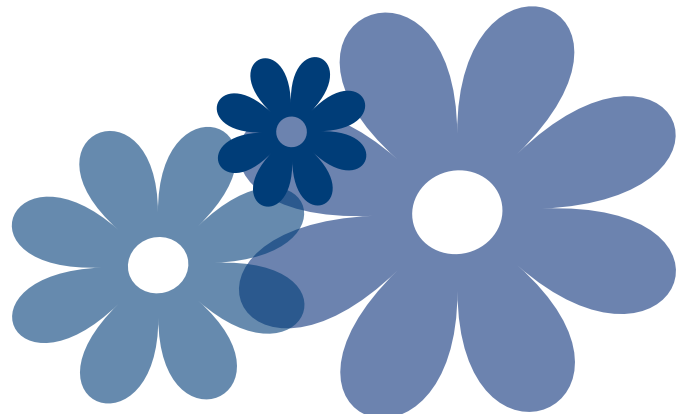
Brenda K Beck, CNM
Melanie Goldberg, CNM

6701 Jefferson NE
Albuquerque, NM 87109
Ph: 505-727-4500

Providers:

Mario Pardo-Friedman, MD, FACOG
Melynda Lopez, CNM

Elizabeth Jaffa, CNM
Beverly Williams, MD



Orthopedics

101 Hospital Loop NE, Suite 201
Albuquerque, NM 87109
Ph: 505-727-4430

Providers:

Casey Figueredo, PA Richard Meredick, MD

500 Walter Street NE, Suite 104
Albuquerque, NM 87102
Ph: 505-727-4430

Providers:

Consuelo J. Apodaca-Crawley, FNP-C Melinda Alfaro-Trombley, PA-C
Christopher Hanosh, MD Patrick Gilligan, MD

10511 Golf Course Rd NW, Suite 104
Albuquerque, NM 87114
Ph: 505-727-4430

Providers:

Tania Pence, DO Jayce Powell, FNP
Mark Werner, MD

Pain Clinic

LOVELACE UNM PAIN MANAGEMENT CLINIC

500 Walter NE, Ste. 213
Albuquerque, NM 87102
Ph: 505-727-7177

Providers:

Christopher Burton, DO Lyn Dawson, CNP
Ruben Franco, PA-C Craig Nairn, MD
Julie Muche, MD Kyle Schoenberger, FNP-BC

LOVELACE PAIN MANAGEMENT CLINIC - WOMEN'S

101 Hospital Loop, Suite 109
Albuquerque, NM 87109
Ph: 505-727-4400

Providers:

Diego Gonzalez, MD Lauren Harris, NP

Physical Medicine & Rehabilitation

500 Walter NE, Ste. 500
Albuquerque, NM 87102
Ph: 505-727-7177

Providers:

Zackery Billington, DO Steven Cen, DO
W. Austin Davis, MD Rebecca Dutton, MD
Gwen Lacerda, MD Christopher Meserve, MD
Emily Miller Olson, MD

Plastic Surgery

6701 Jefferson NE
Albuquerque, NM 87109
Ph: 505-727-1700

Providers:

Teresa Casteel, NP Jeffrey Morehouse, MD

Podiatry

10511 Golf Course Rd NW, Suite 104
Albuquerque, NM 87114
Ph: 505-727-5001

Provider:

Seth Launer, DPM, FACFAS

500 Walter Street NE, Suite 309
Albuquerque, NM 87102
Ph: 505-727-1701

Provider:

Stephanie Parks, DPM, FACFAS

Primary Care

6701 Jefferson NE
Albuquerque, NM 87109
Ph: 505-727-6200

Providers:

Lisa Lackey, FNP Rebecca McKee, FNP-C
Mohan Muvvala, DO Debra Ann Narcisse, ANP-C
Nicole Nunez, NP Katharine Pickett, MD
Janis Santistevan, FNP-C Lyudmyla Sinyenko, ACNP
Vidya Subramanian, MD

4420 Irving Blvd NW
Albuquerque, NM 87114
Ph: 505-727-6300

Providers:

Gina Cappelle, FNP-C Diane Wright, FNP
John Bond, MD Christina Chen, MD
Shavonne Truong, FNP-C Mariah Shatto, FNP-C

3900 Las Estancias Ct SW
Albuquerque, NM 87121
Ph: 505-727-4200

Providers:

Luis Guillermo Beverido, MD Ximena Galarza-Rios, MD
Naomi Quezada, FNP-C Martha Reyes, FNP-C
Abigail Yazzie, FNP-C

Pulmonology & Critical Care

500 Walter St NE, Suite 501
Albuquerque, NM 87102
Ph: 505-727-3170

Providers:

Laura Abeyta, PA-C Trisha Bank, FNP
Caitlyn Brown, NP Viral Gandhi, MD
Lucie Griffin, DO Angel Gutierrez, FNP-BC
Sandra Gutierrez, CNP Camille Hernandez NP
Staci Logue, PA Jeffrey Mazer, MD
Robyn Mitchell, APP Sivakumar Nagaraju, MD
Ben Paruchuri, MD Jason Rotonda, CNP
Heather Salazar, CNP Derek Sandoval, CNP
Tyler Shackelford, DO Keely Wells, CNP

Radiation Oncology

4650 Jefferson Ln NE
Albuquerque, NM 87109
Ph: 505-727-7900

Providers:

Patrick Beagen, MD

Radiology - Outpatient

LOVELACE MEDICAL GROUP - INDEPENDENCE SQUARE

6701 Jefferson NE
Albuquerque, NM 87109
Ph: 505-835-1615

LOVELACE MEDICAL CENTER

601 Dr. Martin Luther King Jr Ave NE
Albuquerque, NM 87102
Ph: 505-835-1615

LOVELACE WESTSIDE HOSPITAL

10501 Golf Course Rd NW
Albuquerque, NM 87114
Ph: 505-835-1615

LOVELACE WOMEN'S HOSPITAL

4701 Montgomery Blvd NE
Albuquerque, NM 87109
Ph: 505-835-1615

HEART HOSPITAL OF NEW MEXICO

504 Elm St NE
Albuquerque, NM 87102
Ph: 505-835-1615

LOVELACE REGIONAL HOSPITAL

117 E. 19th Street
Roswell, NM 88201
Ph: 575-625-3371

Rehabilitation - Outpatient

LOVELACE UNM REHABILITATION HOSPITAL

505 Elm St. NE
Albuquerque, NM 87102
Ph: 505-727-3601

LOVELACE UNM OUTPATIENT REHABILITATION - SOUTH COORS

4250 Coors Blvd SW, Unit C
Albuquerque, NM 87121
Ph: 505-727-4961

LOVELACE UNM OUTPATIENT REHABILITATION - JEMEZ PUEBLO

129A Canal St
Jemez Pueblo, NM 87505
Ph: 505-727-4950

LOVELACE UNM OUTPATIENT REHABILITATION - RIO RANCHO

111 Rio Rancho
Rio Rancho, NM 87124
Ph: 505-727-4950

LOVELACE UNM OUTPATIENT REHABILITATION - SANTA FE

1692 Hospital Dr, Bldg. B, Suite 202
Santa Fe, NM 87505
Ph: 505-727-4971

LOVELACE UNM OUTPATIENT REHABILITATION - WYOMING

7910 Wyoming Blvd NE, Suite C
Albuquerque, NM 87109
Ph: 505-727-4888

LOVELACE WOMEN'S HOSPITAL OUTPATIENT REHAB

4600 Montgomery Blvd NE
Albuquerque, NM 87109
Ph: 505-727-4620

LOVELACE WOMEN'S HOSPITAL OUTPATIENT REHAB - HAND CLINIC

101 Hospital Loop NE, Suite 206
Albuquerque, NM 87109
Ph: 505-727-4657

LOVELACE WESTSIDE HOSPITAL OUTPATIENT REHAB

10511 Golf Course Rd. NW, Suite 205
Albuquerque, NM 87114
Ph: 505-727-2123

LOVELACE REGIONAL HOSPITAL OUTPATIENT REHAB

117 E. 19th Street
Roswell, NM 88201
Ph: 575-625-3372

Roswell Gastroenterology & General Surgery

311 West Country Club Road, Ste 1
Roswell, NM 88201
Ph: 575-625-3400

Providers:

Paul Torres, MD

Roswell OB/GYN

1112 N. Main St
Roswell, NM 88201
Ph: 575-627-4200

Providers:

Katrina Dowdy, CNM

Sarah Whittington, CNM

Roswell Orthopedics

115 E. 19th St.
Roswell, NM 88201
Ph: 575-625-3300

Providers:

Earl Latimer III, M.D.

Deron Ottey, MD

Roswell Primary Care & Pediatrics

1112 N. Main St
Roswell, NM 88201
Ph: 575-627-4200

Providers:

Sarah East-Brumana, PA-C

Tonia Montoya, FNP-C

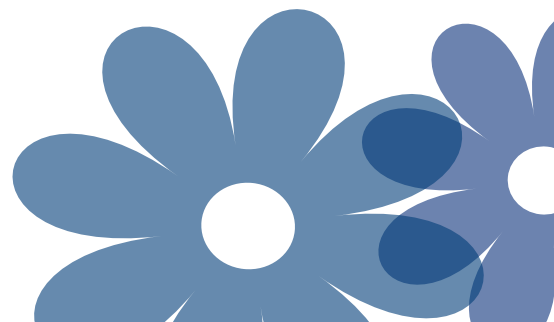
1627 S Union Ave
Roswell, NM 88203
Ph: 575-625-3240

Providers:

Leandra Nier, ACNP-BC

Maribel Sanchez, NP

continue...



Sleep Medicine

500 Walter Street NE, Suite 501
Albuquerque, NM 87102
Ph: 505-727-3170

Providers:

Sivakumar Nagaraju, MD

6701 Jefferson NE
Albuquerque, NM 87109
Ph: 505-727-4000

Providers:

Colbert Chavez, MD Sarah Pack, FNP-BC
Richard Schumann, MD

Urgent Care

6701 Jefferson NE
Albuquerque, NM 87109
Ph: 505-727-0600

Providers:

Kelly Conklin, FNP-C Brittany Dow, FNP-C
Jacqueline Guinn, FNP-C Liz Kirk, FNP-C
Lynn Padilla, FNP-C Holly Stafford, FNP-C
Jeffrey Thomas, MD

Urology

6701 Jefferson NE
Albuquerque, NM 87109
Ph: 505-727-5080

Providers:

Jerome Baca, PA-C Heidi Barnes, PA-C
Aaron Geswaldo, DO Andrew Grollman, MD

Urogynecology

6701 Jefferson NE
Albuquerque, NM 87109
Ph: 505-727-7200

Providers:

Brook McFadden, MD, FACOG, URPS

Lovelace Hospitals

LOVELACE MEDICAL CENTER

601 Dr. Martin Luther King Jr. Ave NE
Albuquerque, NM 87102
Ph: 505-727-8000

LOVELACE WOMEN'S HOSPITAL

4701 Montgomery Blvd. NE
Albuquerque, NM 87109
Ph: 505-727-7800

LOVELACE WESTSIDE HOSPITAL

10501 Golf Course Rd.
Albuquerque, NM 87114
Ph: 505-727-2000

HEART HOSPITAL OF NEW MEXICO

at Lovelace Medical Center
504 Elm Street NE
Albuquerque, NM 87102
Ph: 505-727-1100

LOVELACE UNM REHABILITATION HOSPITAL

505 Elm St. NE
Albuquerque, NM 87102
Ph: 505-727-4700

LOVELACE REGIONAL HOSPITAL

117 E. 19th Street
Roswell, NM 88201
Ph: 575-627-7000

Hospitalists

Ph: 505-727-8360

Serigo Abriola, MD
Sarah Anderson, NP
Ahmed Alaini, MD
Harkesh Arora, MD
Javed Awais, MD
Dorothy Billau, NP
Jason Bowman, ACNP
Doug Brady, NP
Devang Butani, DO
Marshall Caraveo, MD
Violet Chombwe, FNP
Leah Damiani Strain, MD
Victor Ekpe, MD
Eleni Gianacakes, MD
Prathyusha Gudapati, MD
Patrick Haarhues MD
Norbert Jay Sanidad, CNP
Bilal Khan, MD
Rodgers Koech, NP
Ranjit Kumar, MD
Mohammad Malik, DO
David Podolsky MD
Joseph Perea, MD
Cesar Ramos, MD
Kevin Rosenberg, MD
Amanda Sanchez, DO
Martin Tran, DO

David Agyapong, MD
Jesse Acosta, FNP
Vikram Alladi, MD
Banyar Aung, MD
Mario Benavidez, MD
Thomas Boone, MD
Christopher Bradley, MD
Mary Brennan, MD
Radu Butuc, MD
Kimberly Cantu, NP
David Clanon MD
Kelli Dominguez, CNP
Michael Elliott, MD
Mark Grinman, MD
Dareena Benavides, NP
Awais Javed, M.D.
Ritika Kaushal, MD
Robin Knight, MD
Kimberly Kozeliski, NP
Tahir Mahmood, DO
Jody Masters, PA-C
Bernadette Perea-Zamora, NP
Sathish Ramalingam, MD
Revati Reddy, MD
Clay Schneider, NP
Christian Smith, DO
Jay Tseng, MD

Emergency General Surgery

Ph: 505-727-7077

Jacquelyn S. Brandenburg, DO
Geri Davis, NP
Omar Hashmi, MD
Kimberly Merelman, PA-C
Alberto Dominguez-Ventura, MD
Marchell Woodruff, PA-C

Benjamin J. Clifford, PA-C
Christopher Dominguez, MD
David Hoang MD
Mallory Meyer, DO
Brianna Wiemann, MD

continue...

COMMERCIAL/EMPLOYER SPONSORED PLANS

Aetna

Ambetter by Western Sky Community Care - (Individual and family)

America's Choice Provider Network

Blue Cross & Blue Shield of NM

CapRock

Cigna (Roswell only)

Coventry Health Care National Network (Roswell only)

HealthSmart

Humana (Choice and Gold Choice)

Imagine Health

Mesa Mental Health Professionals

Molina Healthcare of NM (Individual and family)

Multiplan/PHCS

New Mexico Oncology Hematology

Consultants (NMOHC) - Employee, family (must verify directly with the payer to determine covered benefits)

OMNI Networks (Roswell only)

Presbyterian Health Plan (ENT, Gastroenterology, Eye surgery, Rehabilitation services only)

Provider Network of America (PNOA)

Southwest Gastroenterology Associates (Employee and Family)

TLC Plumbing (Employee and family)

UMR Ardent Employees

Zelis (Primary Direct & Supplemental Network for hospital services only)

MEDICARE/MEDICARE ADVANTAGE

Aetna Medicare

Allwell by Western Sky Community Care

All Medigap plans that serve secondary to Medicare

Blue Cross Blue Shield of New Mexico (Medicare Advantage and Dual Complete)

Employer group Medicare plans

Humana Medicare Advantage

Presbyterian Senior Plan (Dual Products Only)

Total Community Care- InnovAge

Traditional Medicare and Traditional Medicare/Medicaid Dual Products

United Healthcare Medicare Advantage (Lovelace UNM Rehabilitation Hospital services only)

MEDICAID/MANAGED MEDICAID (TURQUOISE CARE)

Blue Cross & Blue Shield of NM

Presbyterian

Total Community Care- InnovAge

Molina Healthcare of NM

New Mexico Medicaid

GOVERNMENT PROGRAMS/WORKMAN'S COMPENSATION (WC)

ChampVA NM

Chaves County- Indigent Health Care

Community Care Network (CCN)

CorVel-WC (CVWC)

Corizon Health

Coventry Health Care National Network-WC (Roswell only)

Correctional Medical Services NM

Department of Labor NM

Indian Health Services

Pueblo of Isleta (POI)

Pronet Inmate Health Service

Sandoval County Detention

Tricare and Triwest

US Marshall Services

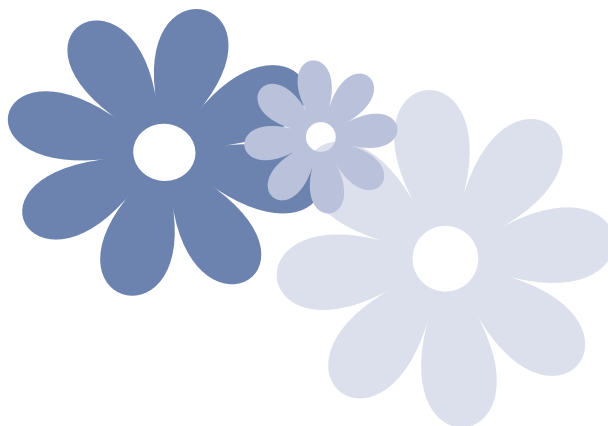
Veterans Health Administration- Veterans Affairs NM

Veterans Choice Program (VPC)

Workers Compensation

NM Mutual Group

For a full list of accepted insurances, visit lovelace.com



Lovelace Health System complies with the applicable Federal civil rights laws and does not discriminate on the basis of race, color, national origin, age, disability or sex.

ATTENCIÓN: si habla español, tiene a su disposición servicios gratuitos de asistencia lingüística. Llame al 1-505-727-8000.

Díí baa akó nínizin: Díí saad bee yánifti'go Diné Bizaad, saad bee áká'ánída'áwo'dęę', t'áá jiik'eh, éí ná hólo, kojí' hódíílnih 1-505-727-8000.